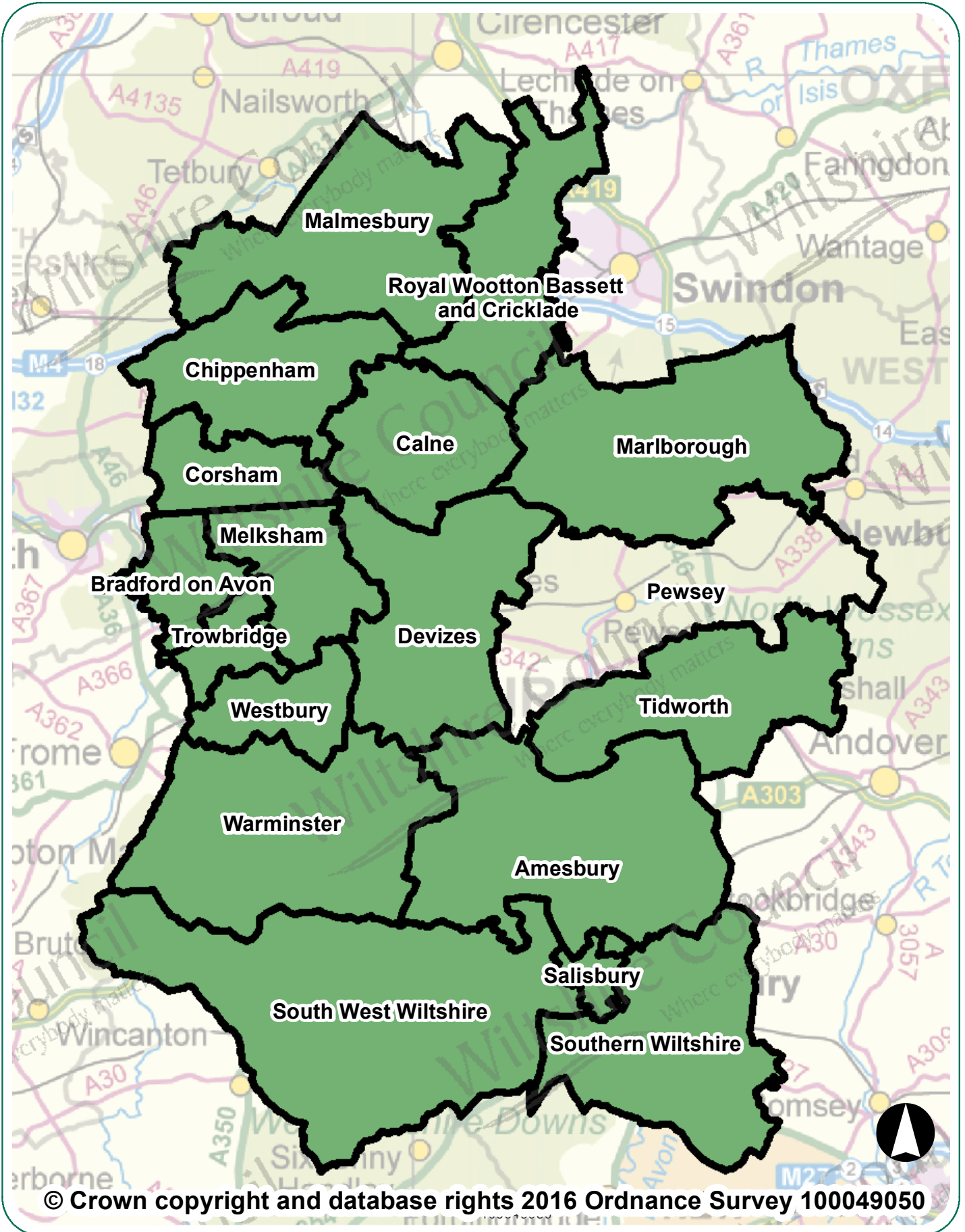


# Pewsey Area Board Highway Information



# Pewsey Area Board Highway Information

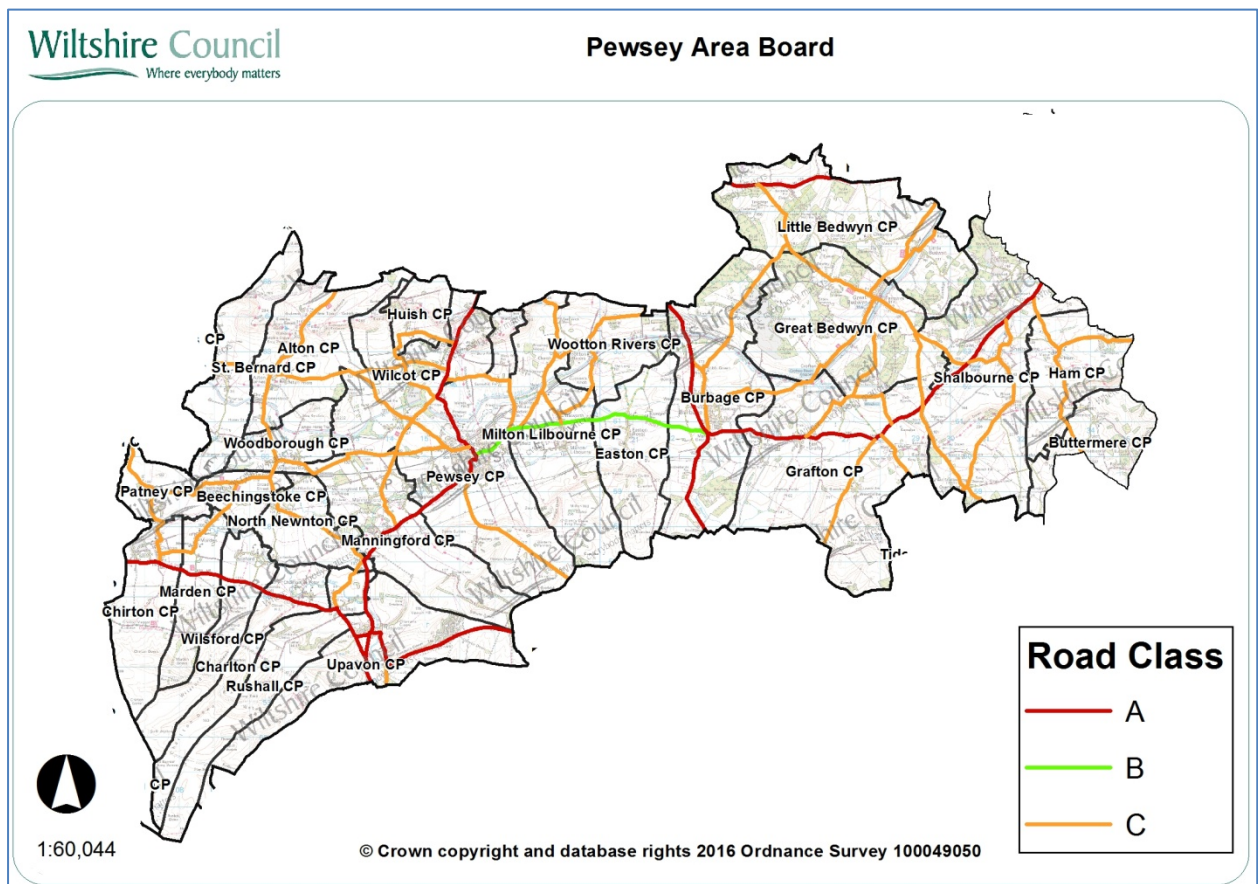
## Introduction

This document summarises highway information for your area board. It lists the recent highway and related work carried out by Wiltshire Council, including the road resurfacing carried out during the first two years of the 'Local Highways Investment Fund 2014 – 2020', and includes other information which should be of interest.

Further information on the Council's activities is available at the website [www.wiltshire.gov.uk](http://www.wiltshire.gov.uk). If you wish to report a specific highway issue please use My Wiltshire. Details are provided at the end of this document.

## Parishes in the community area are:

Stanton St Bernard, Patney, Chirton, Marden, Easton, Wilsford, Charlton St Peter, Rushall, Upavon, Wilcot, North Newnton, Alton, Burbage, Buttermere, Grafton, Beechingstoke, Woodborough, Pewsey, Milton Lilbourne, Huish, Wootton Rivers, Manningford, Ham, Great Bedwyn, Little Bedwyn, Shalbourne



## Network statistics in your area

### Road length by class

Road type	Urban (km)	Rural (km)
A Class Roads	8.76	41.75
B Class Roads	2.84	4.32
C Class Roads	29.86	96.81
Unclassified Roads	42.09	77.77
<b>Total</b>	<b>83.55</b>	<b>220.65</b>
	<b>Overall Total</b>	<b>304.2</b>

The council categorises its roads to reflect their importance. This enables an effective assignment of highway inspection frequencies and maintenance standards.

### Highway assets in your area

The council keeps an inventory of its highway assets in order to assist planning its highway maintenance. Important statistics relating to your board area are:

Asset Type	Measure
Carriageway	304.2 km
Footways adjacent to road	44 km
Footways (linked)	6.14 km
White road centre lines	92 km
Road kerbs	69 km
Grass verge (maintained)	526 km
Drainage grips	2, 755 number
Drainage pipe grips	178 number
Drainage gullies	2,535 number
Road signs	1,975 number
Street lights	5, 078 number

## **Major highway maintenance**

### **Road resurfacing**

Wiltshire has over 3,000 miles of road. The Council's 'Local Highways Investment Fund 2014 – 2020' is making a massive investment to improve the condition of the roads in Wiltshire over six years. The programme of work started in April 2014, and is designed and supervised by the Council's consultants Atkins, with the work carried out by our main highway contractors Tarmac and Eurovia.

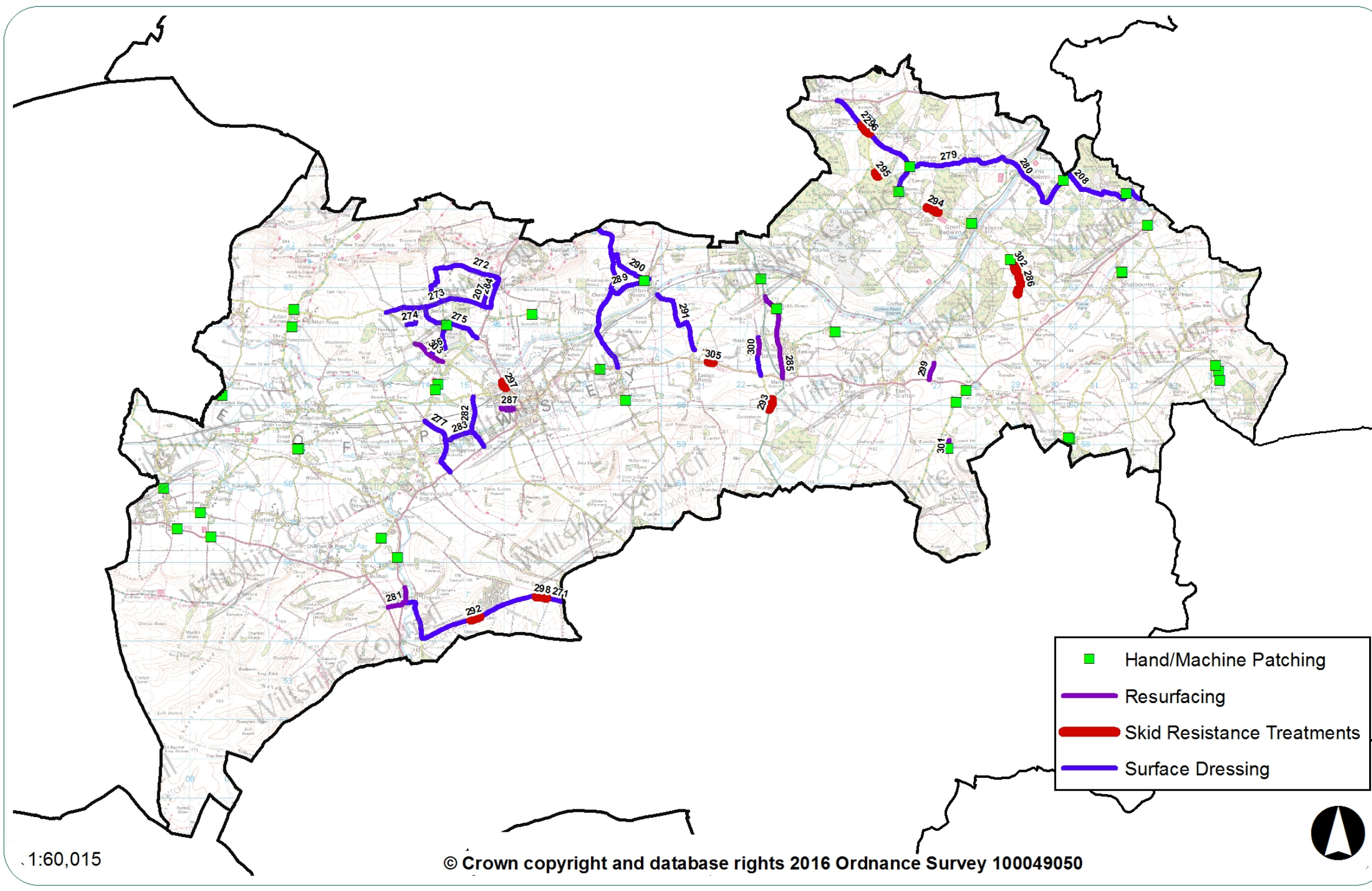
The work carried out in the first two years of the programme has improved a considerable number of the roads in previously poor condition. The locations of sites treated in recent years are shown below.

### **Carriageway repairs**

As well as resurfacing roads other works are undertaken to make localised repairs to keep the roads safe. The works undertaken in your area since 2014 are shown on the map below.

The wet winter and flooding in previous years has resulted in substantial damage to the road network. It is important that serious defects are treated promptly to keep the roads safe. The Council currently operates four Pothole teams that respond to urgent issues to keep the roads safe.

Plan showing major maintenance schemes & hand/machine patching sites completed since 2014



**Major maintenance completed since 2014**

No	Location	Works
271	A342 Andover Road (junction with A345 Pewsey Road to A338 Tidworth Road)	Surface Dressing
272	Cold Blow, Oare (junction with Oare Hill to end)	Surface Dressing
273	Unnamed road (junction with Alton Road to A345 Marlborough/Pewsey road)	Surface Dressing
274	Unnamed road (junction Alton Road to junction Draycott South)	Surface Dressing
275	China Cottage (Draycot South and east to junction south east A345)	Surface Dressing
276	Unclassified Road (Alton Road, Wilcot east next to canal and north around Stowell Park to C268)	Surface Dressing
277	Unnamed road (north through Manningford Abbots from A345 to the Railway Bridge)	Surface Dressing
207	Rudge lane	Surface Dressing
278	A4 southwest to C74 Bedwyn Common	Surface Dressing
279	Chisbury Lane/School Lane	Surface Dressing
280	Canal footbridge se to Upper Slope End Farm	Surface Dressing
208	High Street Little Bedwyn through Bagshot	Surface Dressing
281	Upavon Village	Resurfacing
282	Sharcott Drove (from A345 to Woodborough Road)	Surface Dressing
283	Unnamed road (Manningford Abbots east to junction with Sharcott Drove)	Surface Dressing
284	A345 - Rudge Lane	Surface Dressing
285	Burbage High Street	Resurfacing
286	C197 To Unclassified crossroads, Wilton Down	Skid Resistance Improvements
287	The Crescent, Pewsey	Resurfacing
288	Westcourt (north from B3087)	Surface Dressing
289	Unclassified road (Manville Lane, Clench to Forest Road, Wootton Rivers)	Surface Dressing

Pewsey Area Board Highway Information

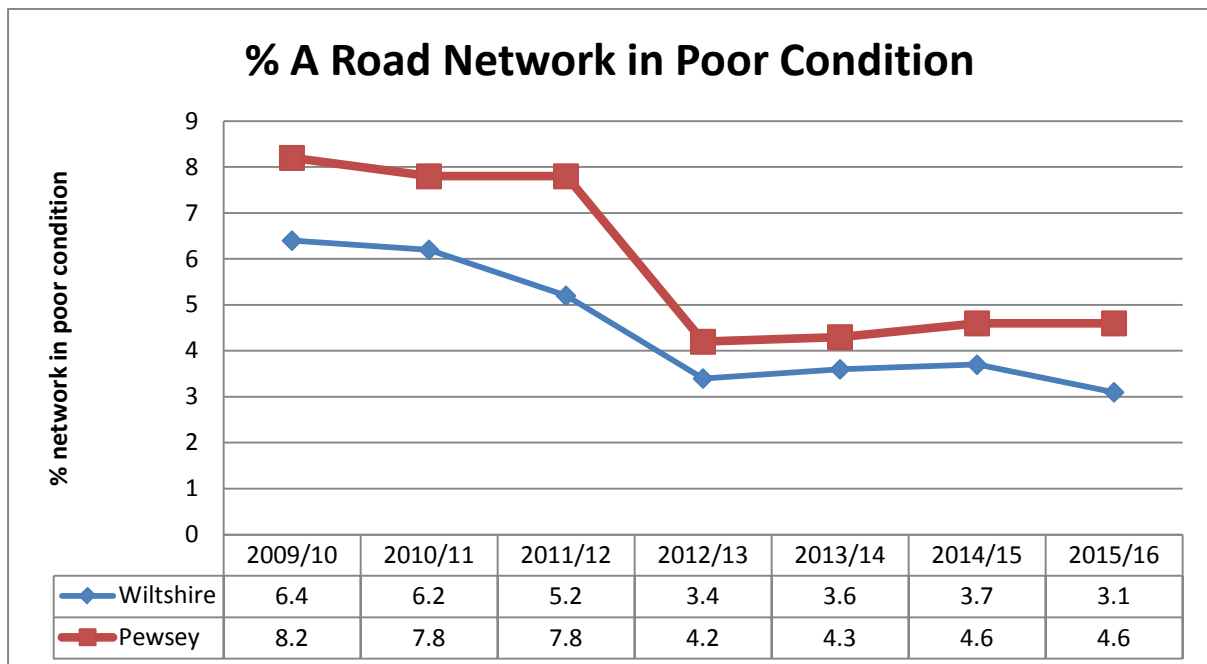
No	Location	Works
290	Manville Lane at East Wick Farm south east to Wootton Rivers	Surface Dressing
291	Pig Path, Wootton Rivers (junction north of Easton Royal north to junction at Halt Wootton Rivers	Surface Dressing
218	Unnamed road (Clench Common south east C265 to junction with Burbage Road B3087	Surface Dressing
292	Avon Square To York Road To York Road	Skid Resistance Improvements
293	A338 Goldenland, Burbage	Skid Resistance Improvements
294	UC Bedwyn Common To 30mph Great Bedwyn	Skid Resistance Improvements
295	C192 To UC Bedwyn Common	Skid Resistance Improvements
296	A4 To UC (Cobham Frith)	Skid Resistance Improvements
297	A345 From B3087 High Sreet To 40mph Pewsey	Skid Resistance Improvements
298	York Road To Three Tracks Meet	Skid Resistance Improvements
299	Hollow Lane, Wilton	Resurfacing
300	Westcourt Rd, Burbage	Resurfacing
301	Wexcombe Loop	Resurfacing
302	Jockey Green, Great Bedwyn	Skid Resistance Improvements
303	C8 Wilcot village	Resurfacing
304	Easton Royal, Burbage	Skid Resistance Improvements
305	Easton Royal, Burbage	Skid Resistance Improvements

## Highway conditions and technical surveys in your area

Roads deteriorate in condition because of various factors, including traffic volumes, ground conditions, and weather and drainage issues. Technical surveys of the condition of the highway network are carried out annually and the information is used to help prioritise schemes. Road safety is the priority, and maintaining adequate skid resistance on the busy high speed roads is vital.

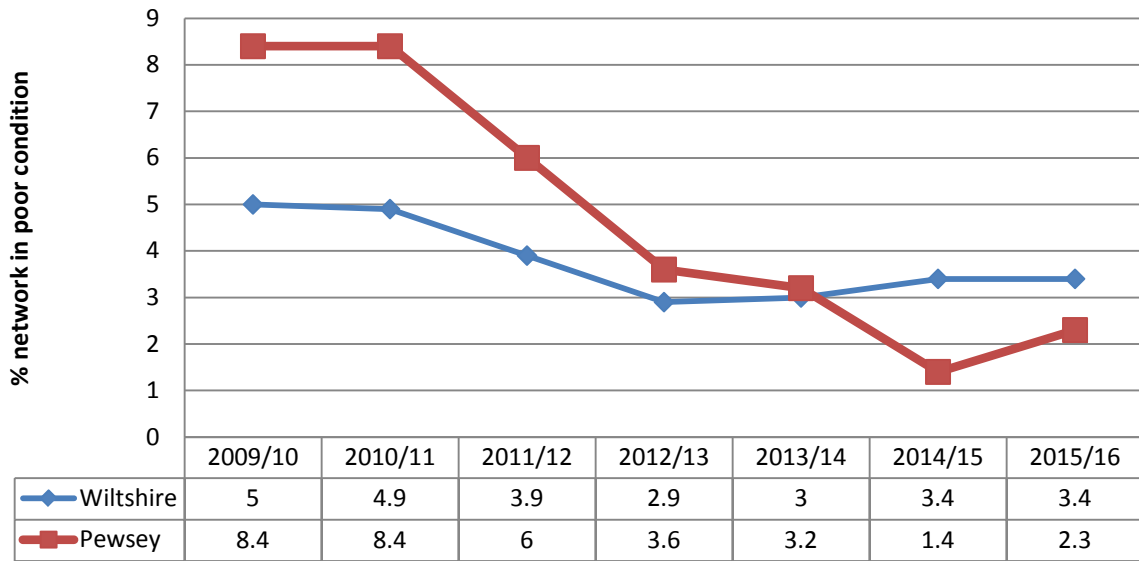
The surveys include the use of a vehicle equipped with lasers and cameras to record road surface condition, which allows us to report on road conditions to the Department for Transport and to prioritise maintenance work. Other surveys include measuring skid resistance on the busier roads.

The road conditions in your area are shown below. It should be noted that low numbers are good because it indicates that less road length should be considered for treatment. More detailed information is shown in Appendix A.

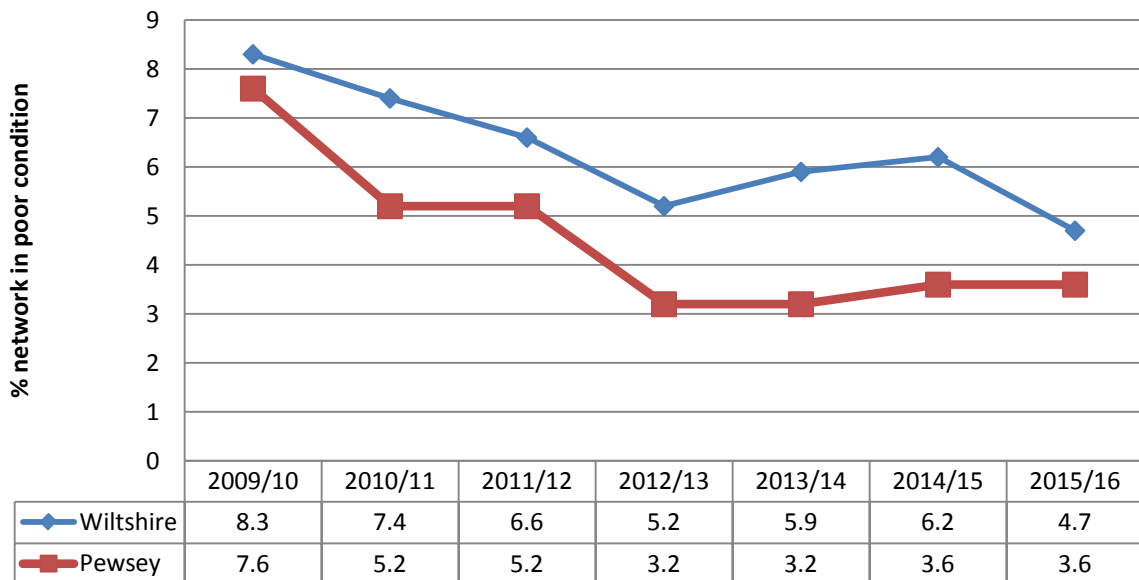


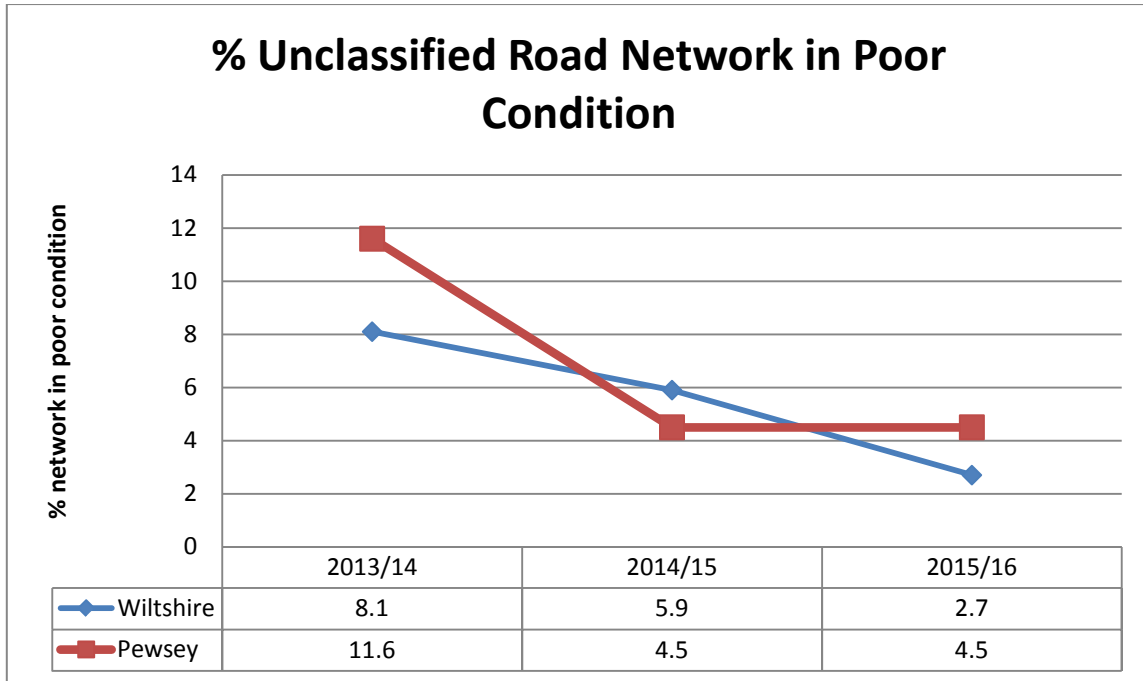


### % B Road Network in Poor Condition



### % C Road Network in Poor Condition





## Integrated transport, bridge and drainage works

### Integrated transport

The Council's traffic engineering team work with our contractors to plan and deliver a range of projects to the local community, most notably through the Area Boards and Community Area Transport Groups (CATGs). The schemes range in size and complexity from simple sign installation through to more complex road safety and improvement schemes.

### Bridges

The Council regularly inspects its bridges and other highway structures. There is a programme of renewal and refurbishment works to keep them in good condition, as well as having to respond to damage caused by collisions.

### Drainage

Programmes of drainage investigations, repairs and flood alleviation schemes are undertaken throughout the year, but the flooding in recent years has meant that there has been a need to respond immediately to flooding issues, as well as dealing with previously identified problem sites. The drainage improvement and flood alleviation work is co-ordinated through the Council's Operational Flood Working Groups that include the Environment Agency, Wessex Water, other organisations and stakeholders.

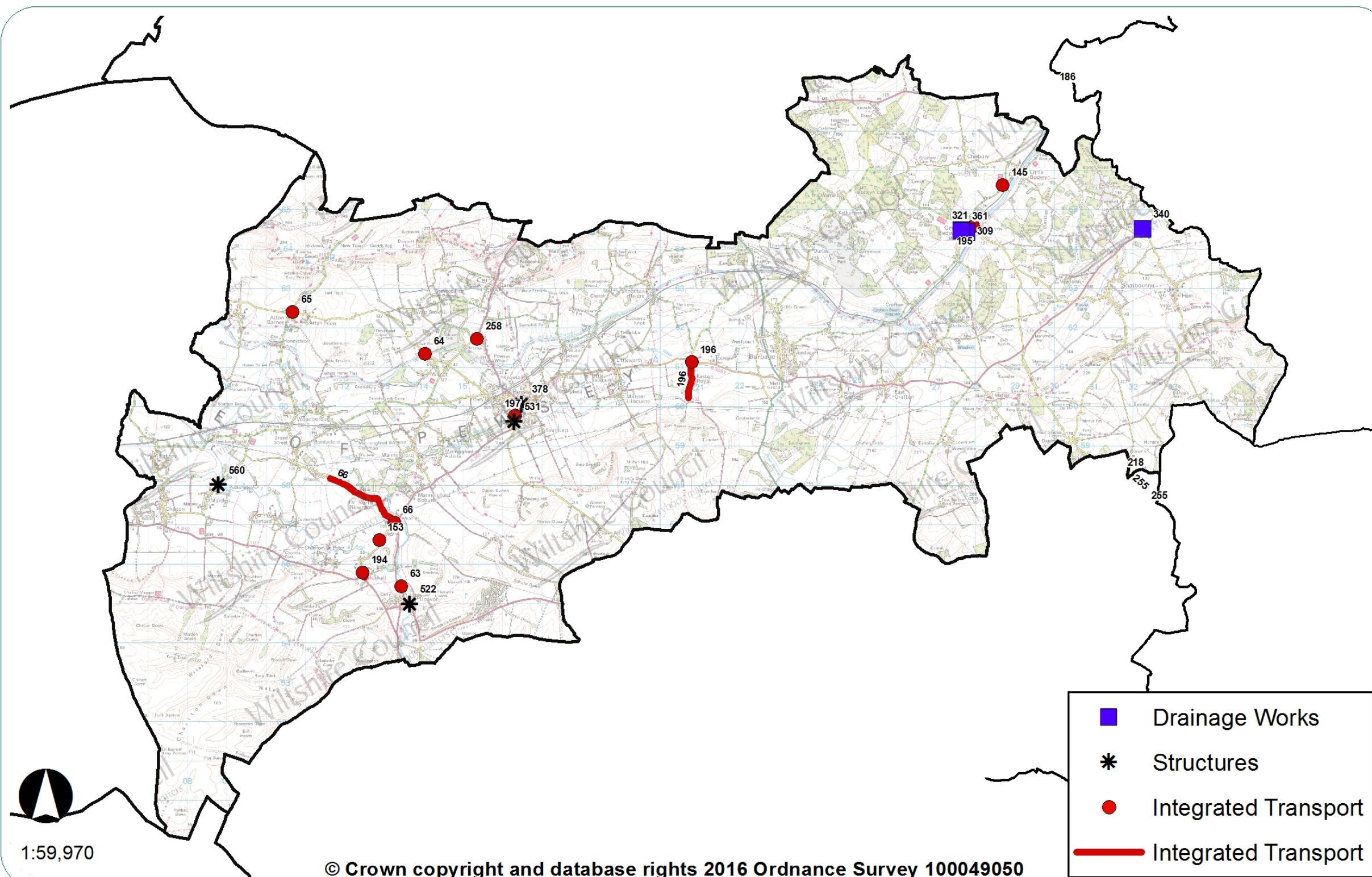
### Recent work in your area

The Integrated Transport, Bridge and Drainage schemes carried out in your area since 2015 are listed below.

Plan showing completed integrated transport, bridge and drainage schemes since 2015



Pewsey Area Board



## Integrated transport schemes since 2015

No	Location	Description
194	Rushall	Rushall Old Barn yard to Church Lane footpath
195	Great Bedwyn	The Knapp Drop kerbs
196	Easton Royal	20mph speed limit
197	Pewsey	Pewsey Manor Court drop kerb
258	A345, Pewsey	Prospect chevrons
63	Upavon	Grey Flags footway Phase 2
64	Wilcot	Alton Road bus stop hard standing
65	Alton	Horse and rider sign
66	C8 & C38	Speed limit implementation
145	Little Bedwyn	Unsuitable for HGVs sign
153	C351 Rushall to North Newton	Warning signs only

### Bridge schemes since 2014

No	Location	Description
560	Marden	Re-pointing, parapet painting
378	Pewsey	Pewsey Town Bridge. Repair elevation
522	Upavon	Upavon Scour
531	Pewsey	Swans Pewsey, concrete repairs

### Drainage works since 2015

No	Location	Description
309	Pewsey	Rebuild of carrier
321	Pewsey	Installation of flood defence wall
340	Pewsey	New Gully and connecting pipe work
361	Pewsey	Construction of flood defence wall

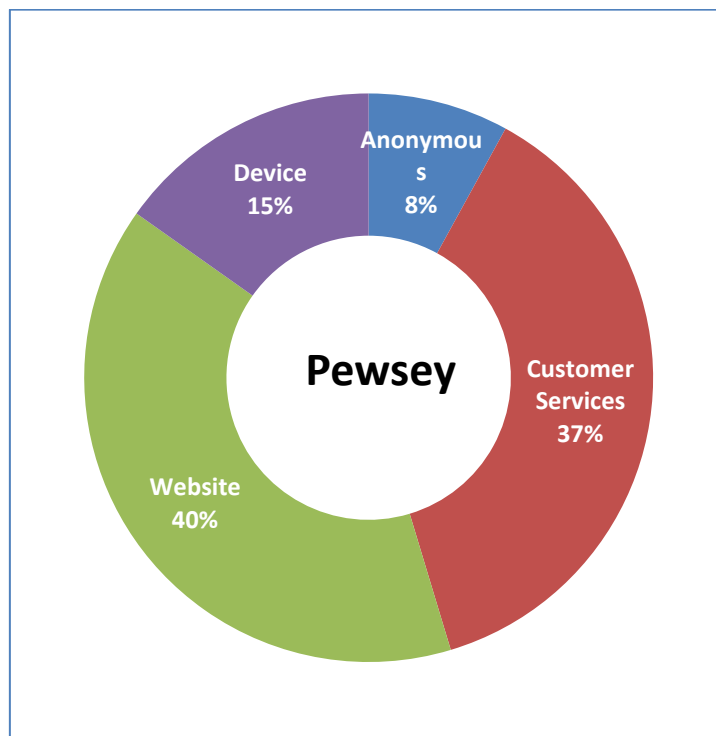
## My Wiltshire



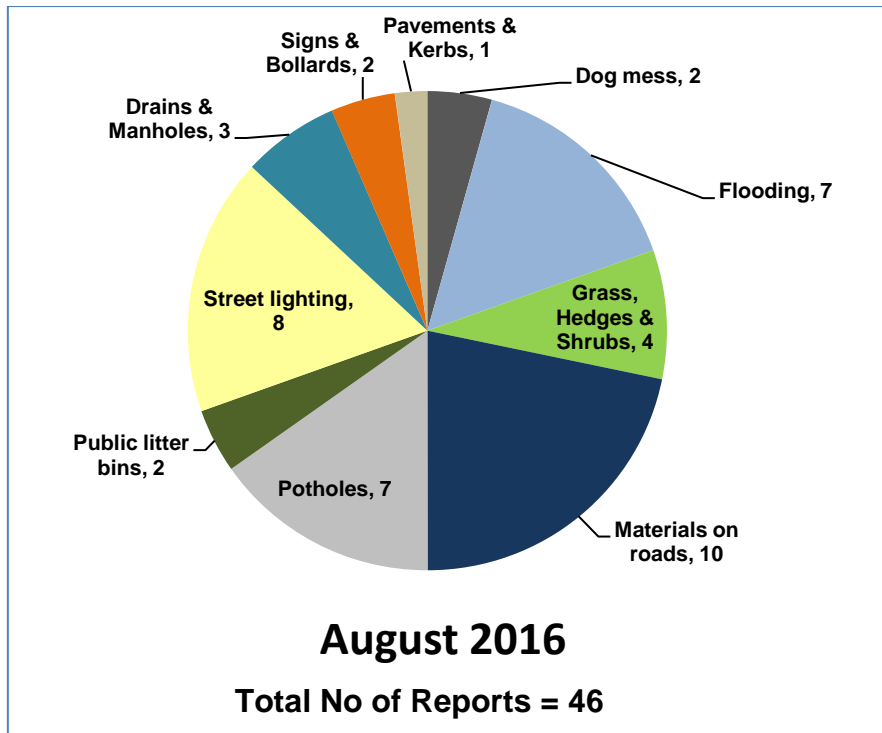
My Wiltshire provides an easy way to report highway issues, including using the Council's website. We have an app so you can report on the go using your smartphone. The My Wiltshire app is available to download at both the [App Store](#) (for iPhones and iPads), from [Google Play](#)<sup>™</sup> (for Android phones) and Windows Store. You can attach information such as photos or videos and pinpoint the location of your report using the mapping software on your phone.

A summary of recent reports in your area is shown below, and further details are shown in Appendix B.

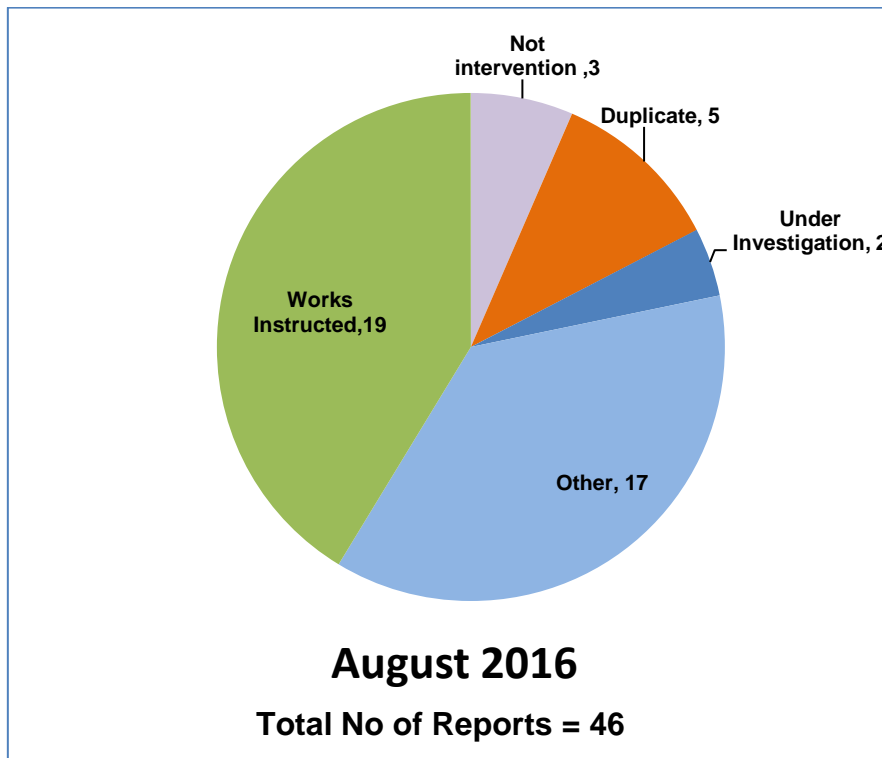
### Customer reporting methods in your area



### Customer reports in your area for the month of August 2016



### Actions following recent reports in your area

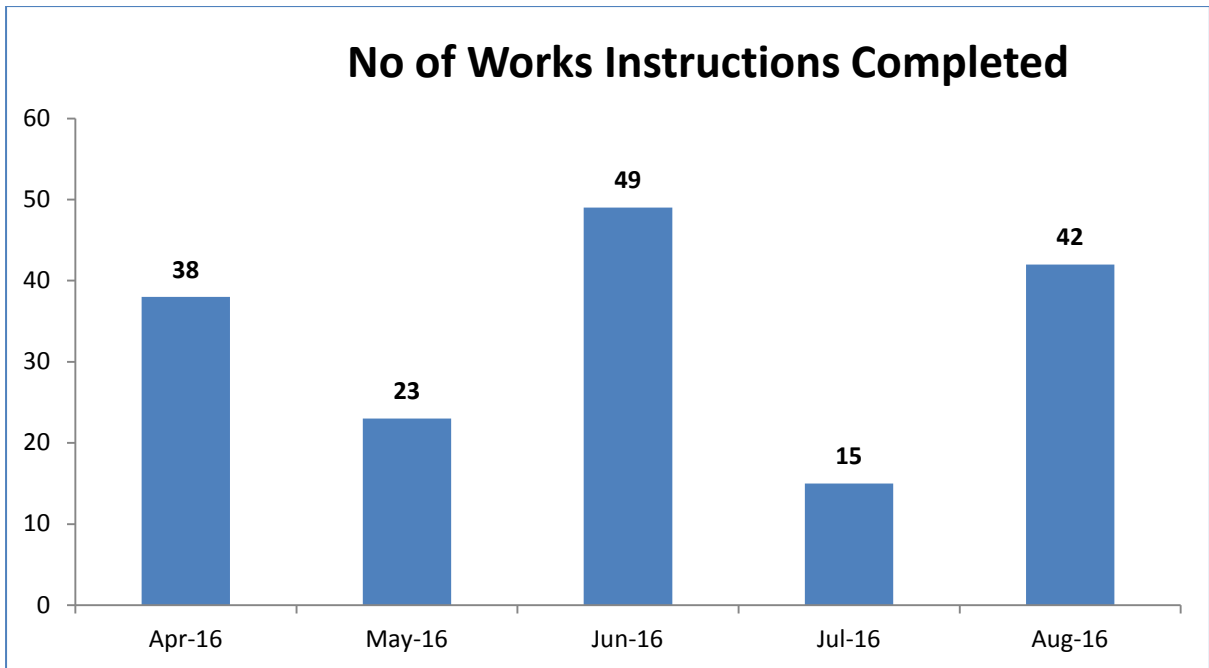


## Action definitions

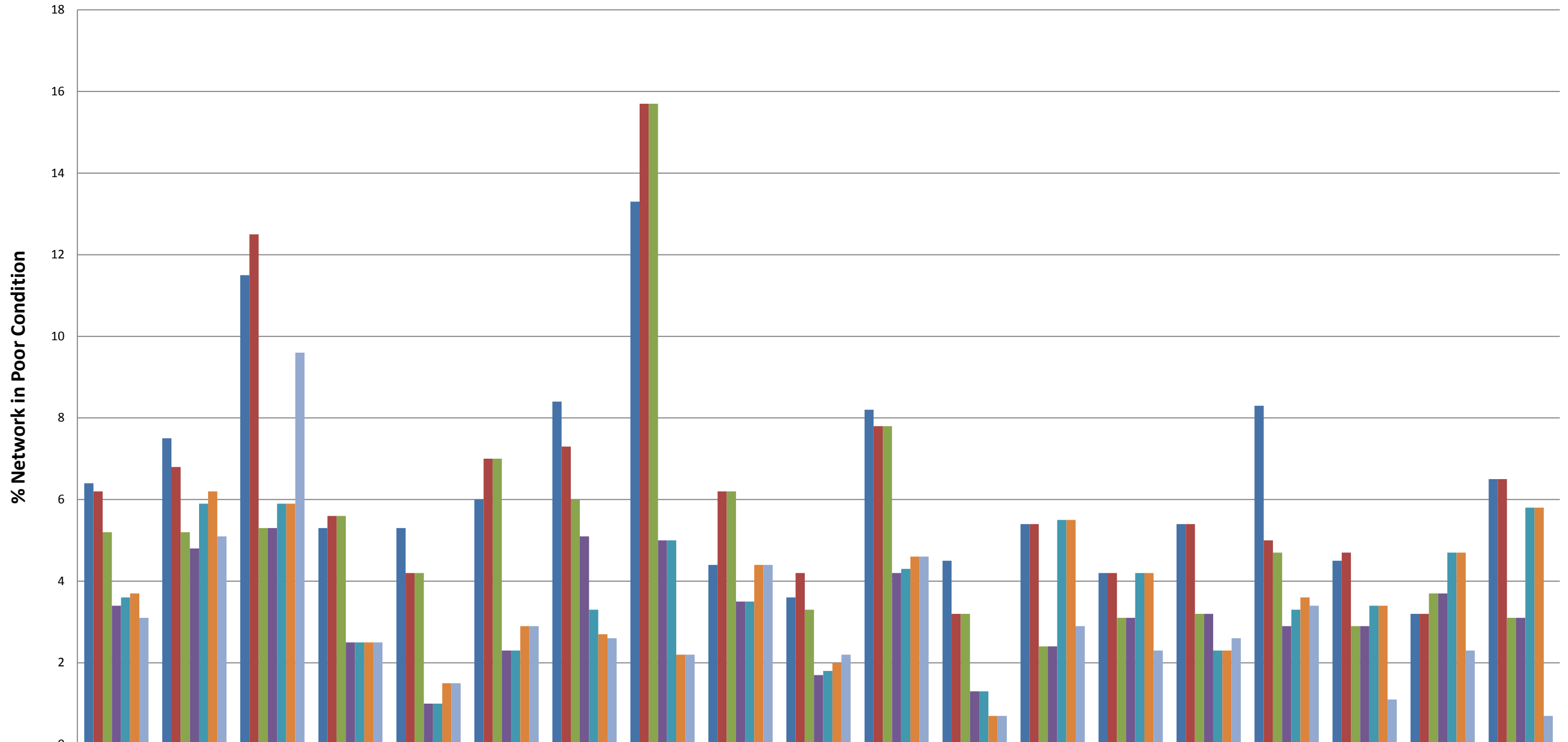
1. **Not Intervention** – the technician has attended site and classified the defect as not meeting intervention levels as per the Highway Inspection Manual 2013 or in the case of streetscene reports, service level agreements.
2. **Duplicate** – a report has already been received in relation to this issue and a works instruction has previously been passed to the contractor to undertake a repair/carry out the necessary works.
3. **Under Investigation** – this issue is currently with a Highways technician or engineer – they may be awaiting information from the customer or the issue requires further investigation e.g. wet weather inspection, drainage survey, exploratory excavation, ownership query.
4. **Discretionary works** – this issue is not a highway safety issue and has been identified as one which falls within the remit of the parish steward scheme.
5. **Other** – the issue has been identified as one which does not require any action by Local Highways. This could be for a number of reasons –
  - the report has been cancelled by the user,
  - there is insufficient information provided to assess the issue and the customer has not provided contact details,
  - the issue is not the responsibility of Wiltshire Council e.g. un-adopted highway, gas/electricity/telephone/water/cable company, Highways England, housing association,
  - the technician attended site and nothing was found at the stated location
  - the issue has been passed to another service within Wiltshire Council e.g. rights of way, bridges.
6. **Works Instructed** – the technician has assessed the issue as requiring works to be carried out and has either dealt with the issue personally or has referred it to the contractor for repair.



**Highway defects completed in your area in recent months**

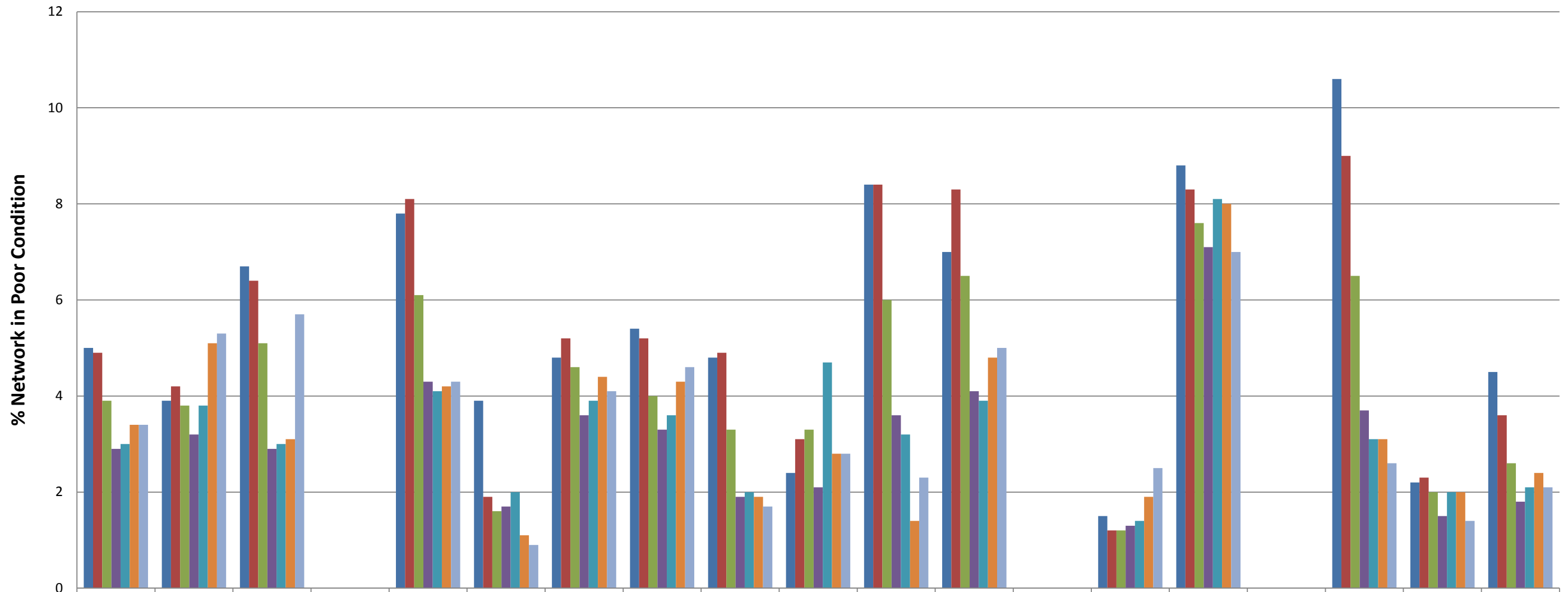


**% A Road Network in Poor Condition**



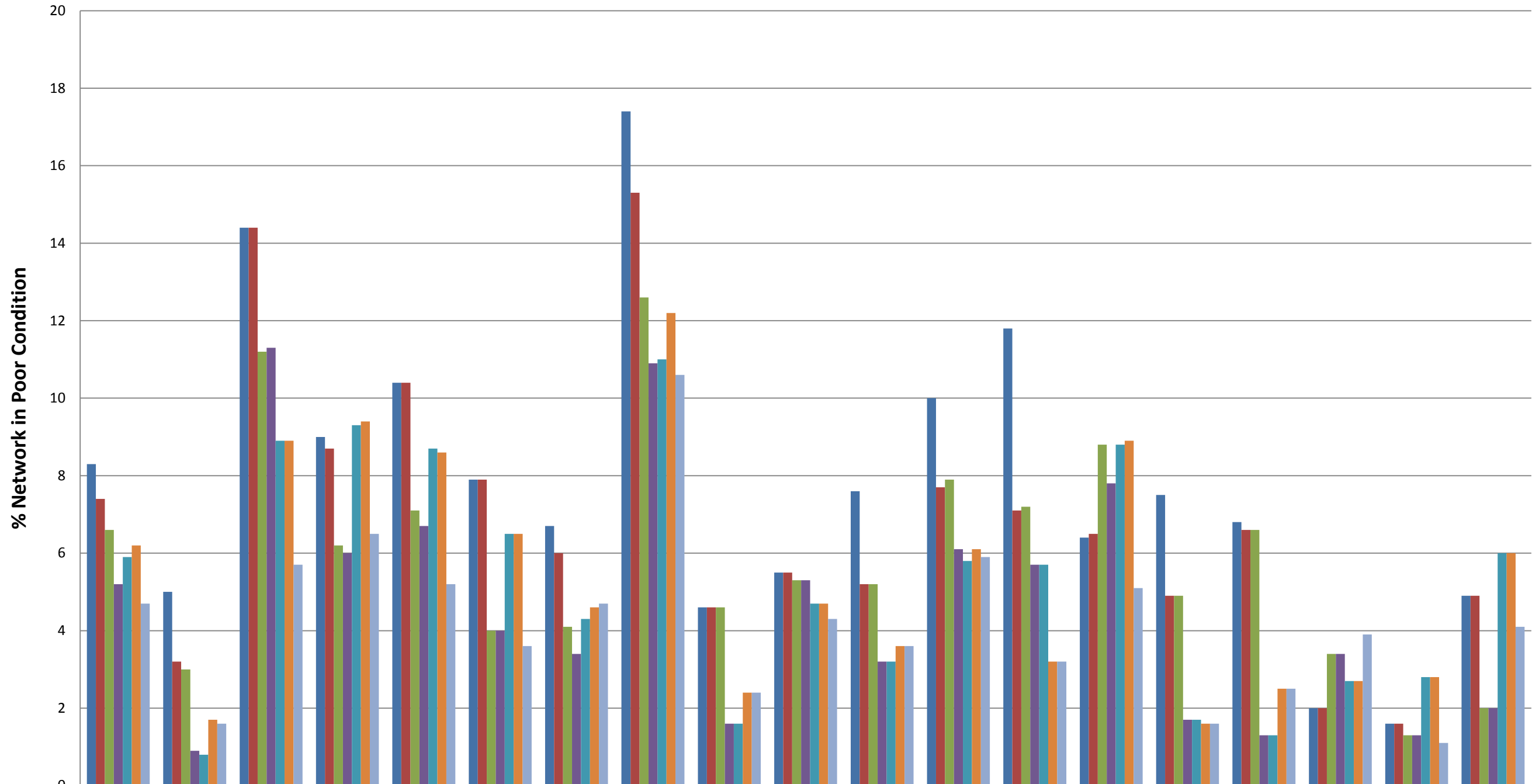
	Wiltshire	Amesbury	Bradford On Avon	Calne	Chippenham	Corsham	Devizes	Malmesbury	Marlborough	Melksham	Pewsey	Royal Wootton Bassett & Cricklade	Salisbury	South West Wiltshire	Southern Wiltshire	Tidworth	Trowbridge	Warminster	Westbury
■ 2009/10	6.4	7.5	11.5	5.3	5.3	6	8.4	13.3	4.4	3.6	8.2	4.5	5.4	4.2	5.4	8.3	4.5	3.2	6.5
■ 2010/11	6.2	6.8	12.5	5.6	4.2	7	7.3	15.7	6.2	4.2	7.8	3.2	5.4	4.2	5.4	5	4.7	3.2	6.5
■ 2011/12	5.2	5.2	5.3	5.6	4.2	7	6	15.7	6.2	3.3	7.8	3.2	2.4	3.1	3.2	4.7	2.9	3.7	3.1
■ 2012/13	3.4	4.8	5.3	2.5	1	2.3	5.1	5	3.5	1.7	4.2	1.3	2.4	3.1	3.2	2.9	2.9	3.7	3.1
■ 2013/14	3.6	5.9	5.9	2.5	1	2.3	3.3	5	3.5	1.8	4.3	1.3	5.5	4.2	2.3	3.3	3.4	4.7	5.8
■ 2014/15	3.7	6.2	5.9	2.5	1.5	2.9	2.7	2.2	4.4	2	4.6	0.7	5.5	4.2	2.3	3.6	3.4	4.7	5.8
■ 2015/16	3.1	5.1	9.6	2.5	1.5	2.9	2.6	2.2	4.4	2.2	4.6	0.7	2.9	2.3	2.6	3.4	1.1	2.3	0.7

### % B Road Network in Poor Condition



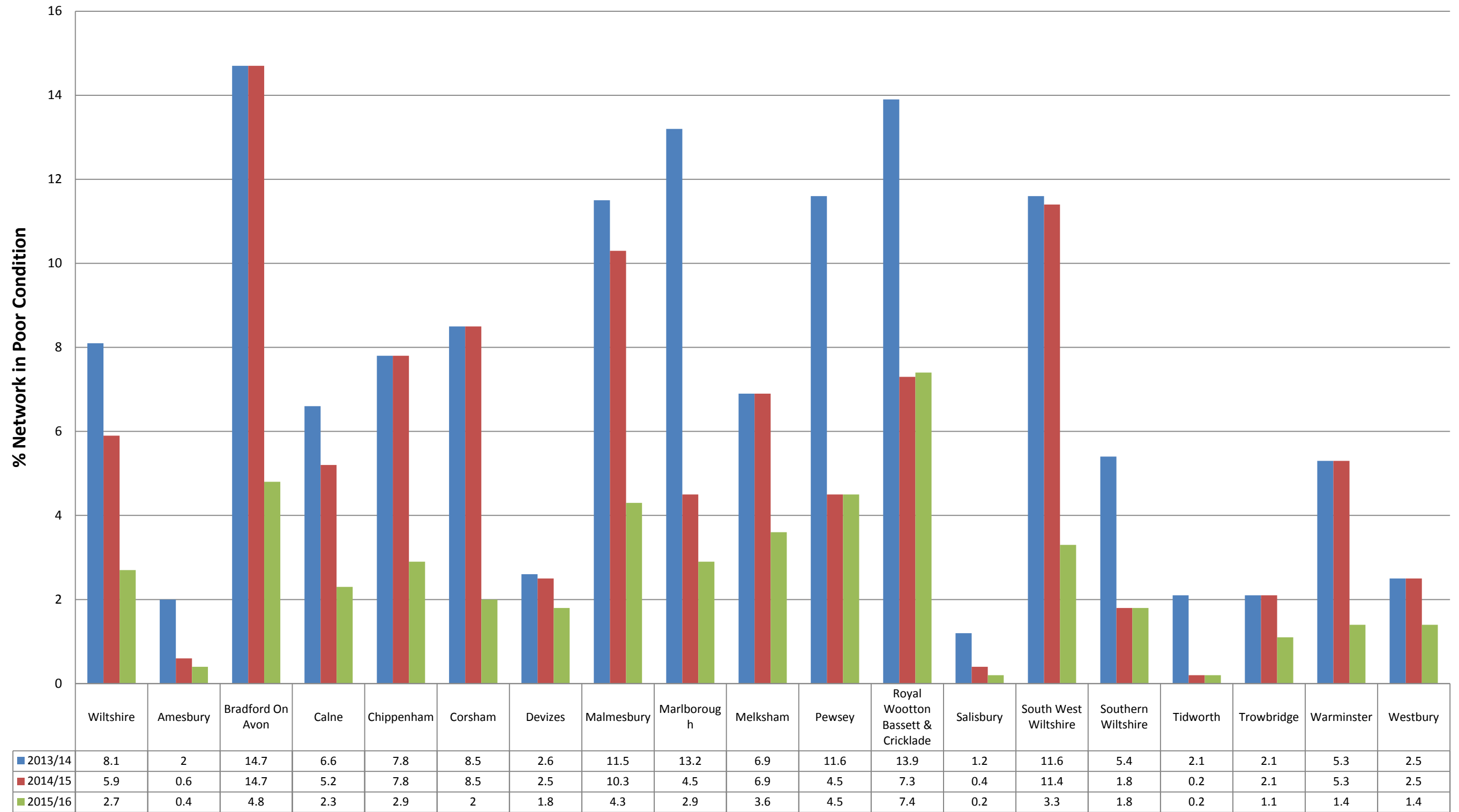
	Wiltshire	Amesbury	Bradford On Avon	Calne	Chippenham	Corsham	Devizes	Malmesbury	Marlborough	Melksham	Pewsey	Royal Wootton Bassett & Cricklade	Salisbury	South West Wiltshire	Southern Wiltshire	Tidworth	Trowbridge	Warminster	Westbury
■ 2009/10	5	3.9	6.7	0	7.8	3.9	4.8	5.4	4.8	2.4	8.4	7	0	1.5	8.8	0	10.6	2.2	4.5
■ 2010/11	4.9	4.2	6.4	0	8.1	1.9	5.2	5.2	4.9	3.1	8.4	8.3	0	1.2	8.3	0	9	2.3	3.6
■ 2011/12	3.9	3.8	5.1	0	6.1	1.6	4.6	4	3.3	3.3	6	6.5	0	1.2	7.6	0	6.5	2	2.6
■ 2012/13	2.9	3.2	2.9	0	4.3	1.7	3.6	3.3	1.9	2.1	3.6	4.1	0	1.3	7.1	0	3.7	1.5	1.8
■ 2013/14	3	3.8	3	0	4.1	2	3.9	3.6	2	4.7	3.2	3.9	0	1.4	8.1	0	3.1	2	2.1
■ 2014/15	3.4	5.1	3.1	0	4.2	1.1	4.4	4.3	1.9	2.8	1.4	4.8	0	1.9	8	0	3.1	2	2.4
■ 2015/16	3.4	5.3	5.7	0	4.3	0.9	4.1	4.6	1.7	2.8	2.3	5	0	2.5	7	0	2.6	1.4	2.1

### % C Road Network in Poor Condition



	Wiltshire	Amesbury	Bradford On Avon	Calne	Chippenham	Corsham	Devizes	Malmesbury	Marlborough	Melksham	Pewsey	Royal Wootton Bassett & Cricklade	Salisbury	South West Wiltshire	Southern Wiltshire	Tidworth	Trowbridge	Warminster	Westbury
■ 2009/10	8.3	5	14.4	9	10.4	7.9	6.7	17.4	4.6	5.5	7.6	10	11.8	6.4	7.5	6.8	2	1.6	4.9
■ 2010/11	7.4	3.2	14.4	8.7	10.4	7.9	6	15.3	4.6	5.5	5.2	7.7	7.1	6.5	4.9	6.6	2	1.6	4.9
■ 2011/12	6.6	3	11.2	6.2	7.1	4	4.1	12.6	4.6	5.3	5.2	7.9	7.2	8.8	4.9	6.6	3.4	1.3	2
■ 2012/13	5.2	0.9	11.3	6	6.7	4	3.4	10.9	1.6	5.3	3.2	6.1	5.7	7.8	1.7	1.3	3.4	1.3	2
■ 2013/14	5.9	0.8	8.9	9.3	8.7	6.5	4.3	11	1.6	4.7	3.2	5.8	5.7	8.8	1.7	1.3	2.7	2.8	6
■ 2014/15	6.2	1.7	8.9	9.4	8.6	6.5	4.6	12.2	2.4	4.7	3.6	6.1	3.2	8.9	1.6	2.5	2.7	2.8	6
■ 2015/16	4.7	1.6	5.7	6.5	5.2	3.6	4.7	10.6	2.4	4.3	3.6	5.9	3.2	5.1	1.6	2.5	3.9	1.1	4.1

### % Unclassified Road Network in Poor Condition



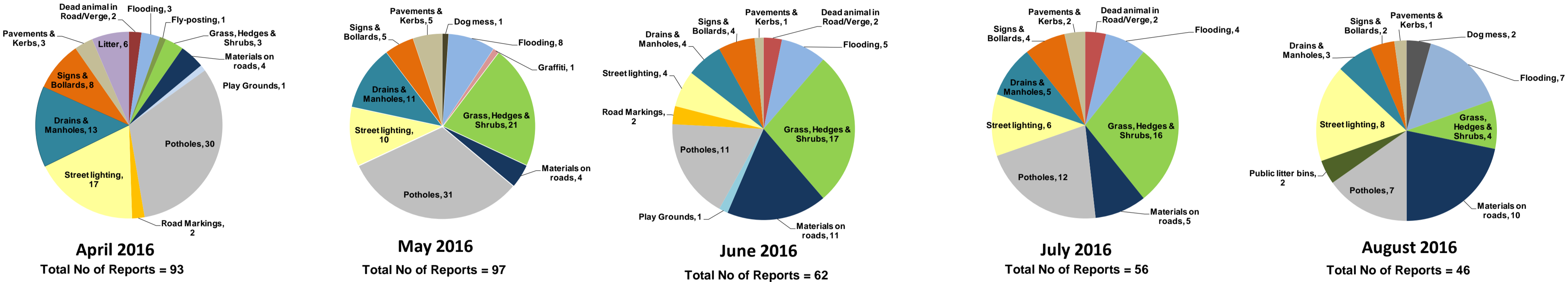
# Appendix B: My Wiltshire Statistics



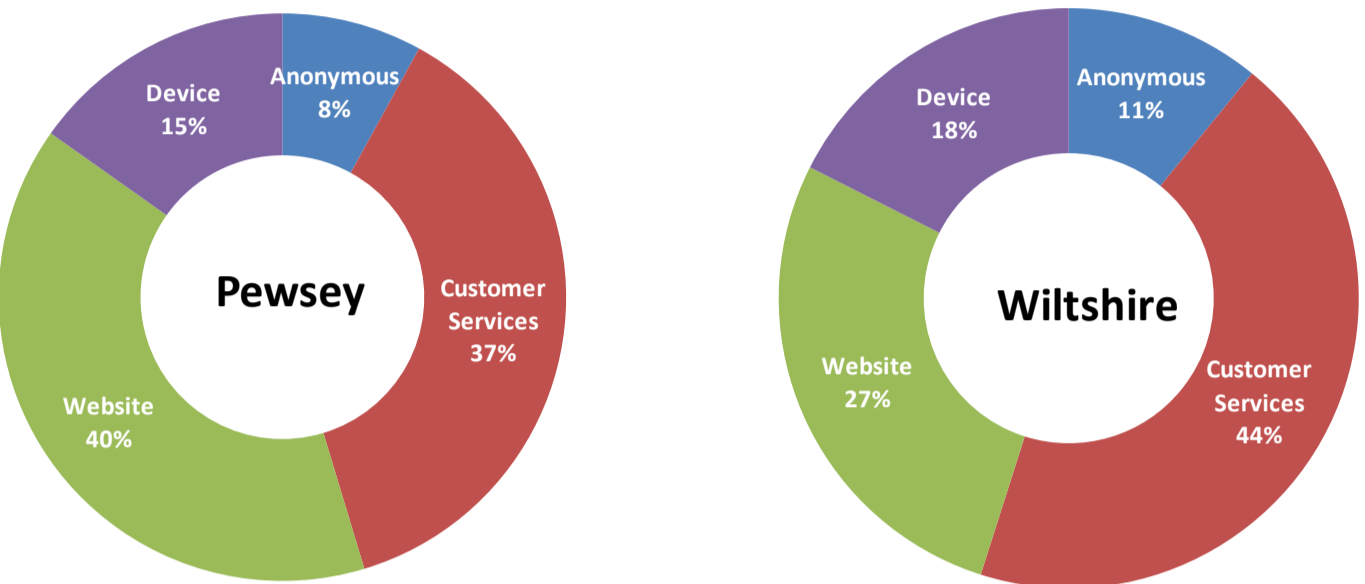
## Pewsey Area Board



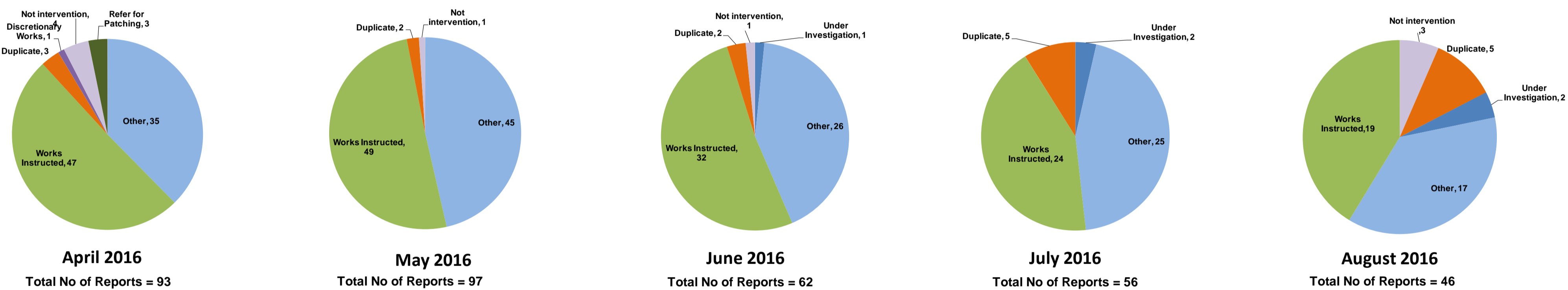
### Customer Reported Issues



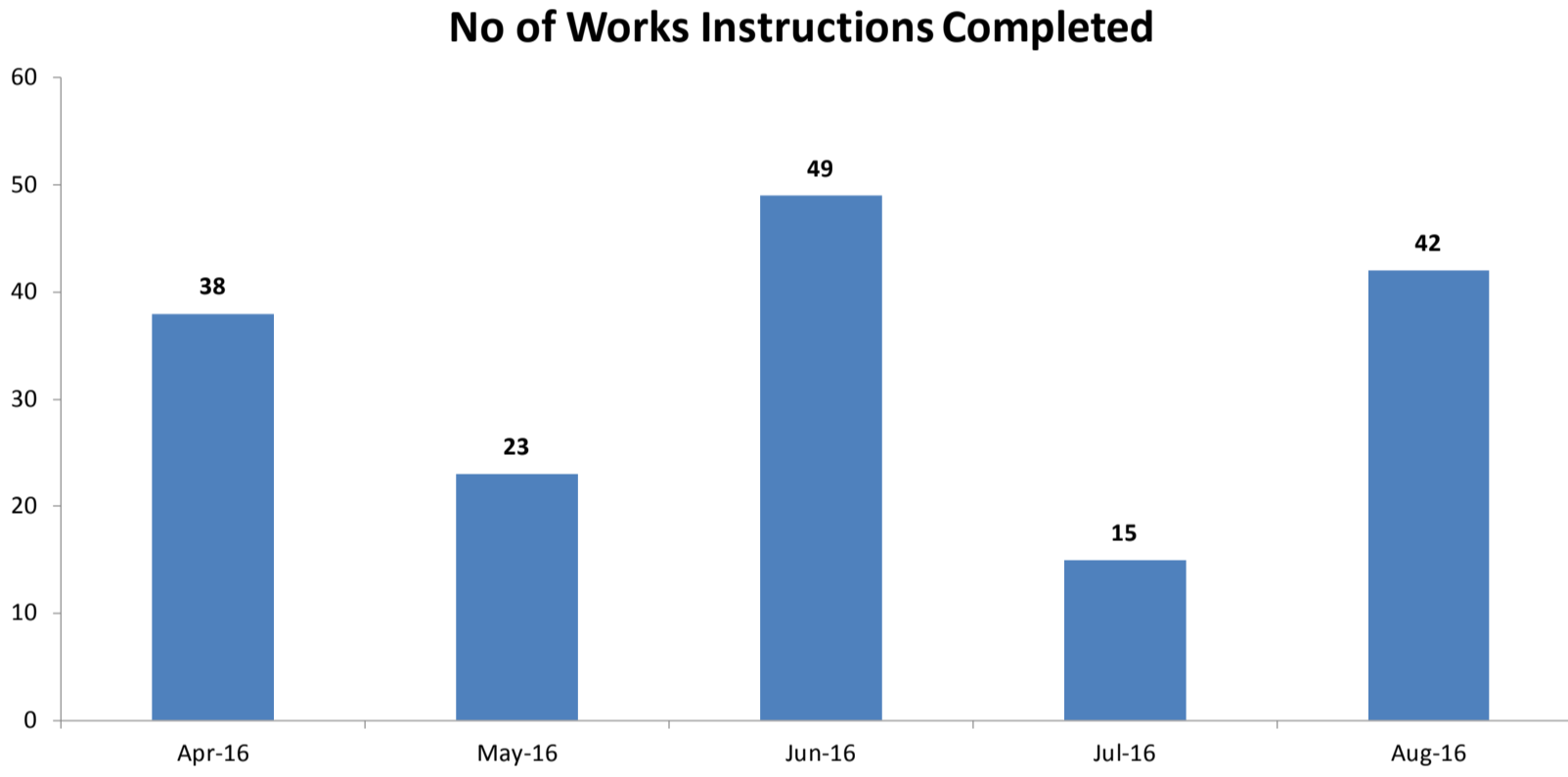
### Reporting Channels



### Customer Call Outcomes



### Completed in Month



### Safety Inspections

